

Precautions



Setting up

Ensure that the mains supply in your house complies with that indicated on the identification sticker located at the back of your player. Install your player horizontally, on a suitable base (furniture), with enough space around it for ventilation (7-10 cm). Make sure the ventilation slots are not covered. Do not stack other, or heavy equipments on top of the player. Do not place the player on amplifiers or other equipment which may become hot. Before moving the player, ensure the disc tray is empty.

This player is designed for continuous use. Switching off the DVD player to the stand-by mode does not disconnect the electricity supply. In order to separate the player completely from the mains, it has to be disconnected by unplugging the mains plug, especially when left unused for a long period of time.



Caution

Protect the player from moisture and excess heat (e.g. fireplace) or equipment creating strong magnetic or electric fields (i. e. speakers ...). Disconnect the power cable from the mains electricity supply if the player malfunctions. Your player is not intended for industrial use but for domestic purposes only.

Use of this product is for personal use only. Copying CDs or downloading music files for sale or other business purposes is or may be a violation of copyright law.

DISCLAIMER OF WARRANTY: TO THE EXTENT ALLOWED BY APPLICABLE LAW. REPRESENTATIONS AND WARRANTIES OF NON-INFRINGEMENT OF COPYRIGHTS OR OTHER INTELLECTUAL PROPERTY RIGHTS RESULTING FROM THE USE OF THE PRODUCT UNDER CONDITIONS OTHER THAN AS HEREBY SPECIFIED ARE HEREBY EXCLUDED.

Condensation

If your player or a disc have been stored in a cold atmosphere, as for example during transportation in the winter, wait for approximately 2 hours until they have reached room temperature.

For your safety

Never open the player or any of its components. It can be dangerous for you or for certain fragile components. You could receive an electric shock or touch the laser beam. Do not place your eyes close to the opening of the disc tray or any other opening to look inside the player.

Discs

Always handle your discs with care. Hold a disc with fingers on the border or hole. Always place disc with the label facing upward (in case of a single-sided disc). Always place the disc properly into the tray using the proper guide area. Always use a soft cloth to clean discs if necessary, wipe from the centre to the border. Always put discs back into their cases after playing and store in a vertical position. Never try to play a Photo CD. Never use record cleaning sprays, benzine, static electricity liquids or any other solvent, if the disc surface is dirty. Wipe gently with a soft damp (water only) cloth, never wipe the disc in a circular motion, since circular scratches are likely to occur and could cause noise during playback.

DVD copy protection

In accordance with the DVD standard, your DVD player is equipped with a Copy Protection system, which can be triggered on and off by the DVD disc itself, in order to make any recording of the concerned DVD disc onto a videotape of very poor picture quality, or even impossible. "This product incorporates copyright protection technology that is protected by method claims of certain U.S. patents and other intellectual property rights owned by Macrovision Corporation and other rights owners. Use of this copyright protection technology must be authorized by Macrovision Corporation, and is intended for home use only unless otherwise authorized by Macrovision Corporation. Reverse engineering or disassembly is prohibited."

Dear customer,

Please note that when this product will reaches the end of its service life, you will need to take responsibility for any special handling needed in its disposal.

THOMSON multimedia shall not be responsible if the player is not used according to this manual.

Discs you can play



Video Digital Versatile Discs - 12 cm and 8 cm, single or double sided, single or dual layer. DVDs are high density optical discs on which high quality picture and audio are recorded by means of digital signals.

Region code number - Your DVD player responds to the region management information recorded on a DVD disc. The region code for your player is region **2**. So, if you are going to buy a DVD disc, pay attention to the logo: it has to be the right one. Your DVD drive allows you to read DVD disks for «Region 2» and «ALL regions». **ALL** means all regions. **Other regions** - **1**: USA, Canada - **2**: Europe, the Middle East, Rep. of South Africa, Japan - **3**: Southeast Asia, Taiwan - **4**: Central America, South America, Australia, Mexico, New Zealand - **5**: Russian federation, Africa (except Egypt and Rep. of South Africa), India, Pakistan **6**: China.



DVD-R, DVD-RW - Most **DVD-R** (one recording only), **DVD-RW** and **DVD+RW** discs (rewritable). Depending on the **DVD** writer and discs used.



Video CD (VCD) - Video Compact Disc - CD on which you can record up to 74 min. of VHS-quality video associated with still images, audio tracks and interactive menus.



CD-R, CD-RW - Most **CD-R** (one recording only) and **CD-RW** discs (rewritable). Depending on the **CD** writer and discs used.



Audio CDs - Audio CDs and most recordable audio CDs (8 and 12 cm).



JPEG files - CD-Rs containing **IMAGES** in JPEG format.

About CD-R/MP3 discs

CD-R discs - This unit can play most CD-R discs. However, depending on the condition of the CD-recorder, computer and the disc used, you may find that not all discs will play successfully. When playing a CD-R disc, it is completely normal for the unit to take up to 20 seconds to recognize the disc before starting to play. If the disc is not recognized after a period of 20 seconds, remove the disc, and then insert it again. If after several trials, this disc cannot be recognized, make sure you have followed the recommendations below or try another type of disc. There are two main types of recordable CDs: - CD-R audio discs (for music only), which should be used when recording with HiFi CD-audio recorder. - CD-R Data discs are designed for recording via a CD writer on a personal computer. Use these discs as a preference.

• Whatever the real recording capacity of the CD-R, do not use more than 630 Mb of recording space on the disc. • As a preference, opt for 74-min (650 Mb) CD-Rs instead of 80-min (700 Mb) CD-Rs. • As a preference, opt for CD-Rs instead of CD-RWs (rewritable CDs) as, in certain cases, CD-RW playback may be faulty. • Use reliable, good-quality CD writing software. • Close all other applications on the computer to ensure reliable CD-R disc recording. • Make sure that the recording is "long enough" to be played. If the recording is too short, disc identification time may be increased.

CD-R MP3 discs - In the case of CD-R MP 3 discs, please follow all the recommendations for CD-R above, plus the comments below:

• **Your MP3 files should be ISO 9660 format.** ISO 9660 format MP3 file is compatible with Microsoft's DOS and Windows, and with Apple's Mac. • **When naming your MP3 files do not exceed 12 characters, and place ".mp3" as the file extension.** General name format of: Title.mp3. When composing your title ensure that you use 8 characters or less, have no spaces in the name, and avoid the use of special characters including (. / , \ , = , +) or characters with accents (é, à, è, ...). • **Use a decompression transfer rate of at least 128 kb/sec (kilobytes/second) when recording MP3 files.** Sound quality with MP3 files basically depends on the rate of compression/decompression you choose. Getting audio CD quality sound requires an analog/digital sampling rate, that is conversion to MP3 format, of at least 128 kb/sec and up to 160 kb/sec. However, choosing higher rates, like 192 kb/sec or more, only rarely give even better sound quality. Conversely, files with sampling rates below 128 kb/sec will not be played properly. • **Do not try recording copyright protected MP3 files.** "secured" files are encrypted and code protected to prevent illegal copying. These files are of the following types: Windows Media™ (registered trade mark of Microsoft Inc) and SDMI™ (registered trade mark of The SDMI Foundation). You must not copy such files.

• **Important:** The above recommendations cannot be taken as a guarantee that the DVD player will play MP3 recordings, or as an assurance of sound quality. You should note that certain technologies and methods for MP3 file recording on CD-Rs prevent optimal playback of these files on your DVD player (that is degraded sound quality and even, in some cases, inability of the player to read the file or files).

N.B.: The information given in this document has been updated in February 2002.

Contents

Player connections and initial settings

Precautions	1
Discs you can play	2
• About CD-R/MP3 discs	
Initial setup	4-5
• Before you start	
• Initial setup of your remote control	
• Initial setup of your DVD player	
Other connections	6-7
• Connections	
• Connections example	
Remote control	8
Front panel display	9
Menus and banners	10-11
• Selecting menu functions and options using the remote control navigation keys	
• Titles, chapters • Audio language, Subtitle languages • Angle • Repeat	
• Playback • Intros can	
Display menu	12
• PAL or NTSC television • Display panel	
• Picture format	
Sound menu	13
• Sound Logic • Virtual Surround	
• Digital audio output	

Playing your discs DVDs, audio CDs

Basic functions	14-15
• Loading a disc	
• Playing a disc	
• Slow motion, Stills and Search	
• Quick search of images or a track • Still picture and frame advance • Slow motion	
• Direct access to a music track • Titles, chapters, time elapsed, audio and subtitles	

Operation Advanced functions

Play modes	16-17
• Automatic or Standard playback	
• Random play • Programming playback	
• Programmed play	
Repeat playback	18
• Repeat play • Repeat playback of a scene between two points	
Other functions	19
• Video CD - special operation	
• DVD - Camera angles	
• DVD and Video CD - Zoom	
Reading JPEG and MP3 files	20
• Reading JPEG files	
• What's MP3?	
• MP3 CD Playback	
• Song skip	
lock	21
• lock Player	
• Ratings limits	
Preferred languages	22-23
• Language of player menus	
• Language of disc menus	
• Language of the dialogues	
• Language of the subtitles	
Appendix	24
• Troubleshooting guide	
• Technical data	



Initial setup ...

Before you start

Thank you for purchasing one of our videos. Unpack the set completely and tear off the protection films.

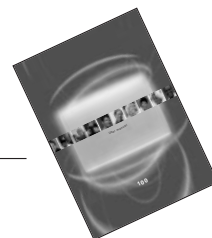
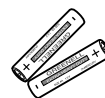
DVD player _____

Remote control _____

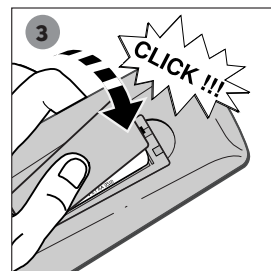
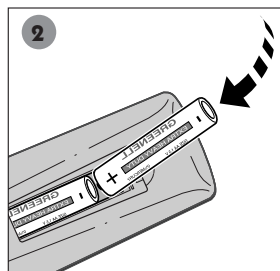
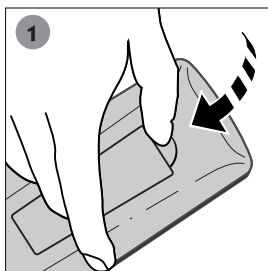
2 non-rechargeable batteries (AA type) _____

AV Cable _____

Instructions for installation and use _____



Initial setup of your remote control



Insert two LR06 or AA batteries in the remote control as shown opposite.



Do not mix different types of batteries or new and old batteries. Do not use rechargeable batteries. In order to avoid any risk of explosion, observe polarities indicated inside the battery compartment. Replace only with the type of batteries specified above. Do not throw them into fire, do not recharge them. If you are not using the remote control for a long period of time, remove the batteries.



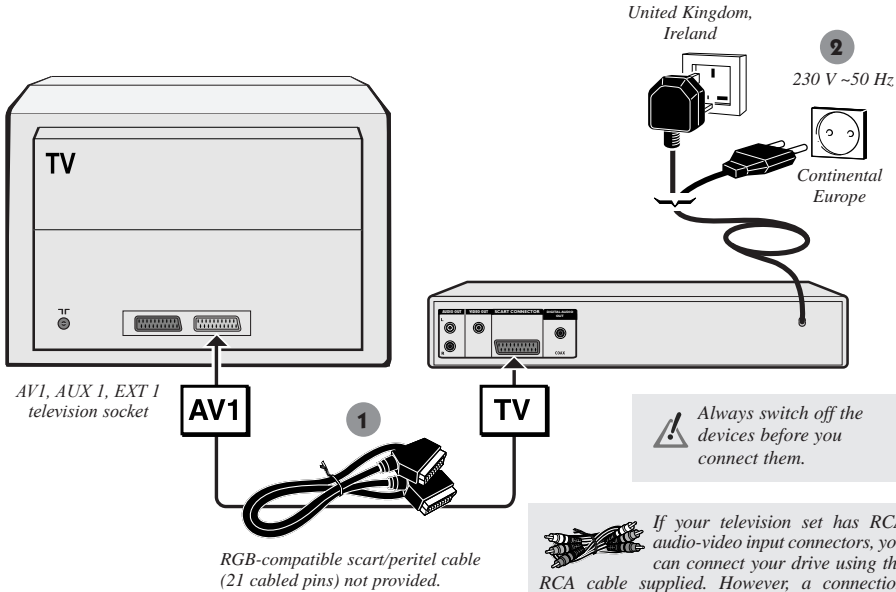
Please respect the environment and prevailing regulations. Before you dispose of batteries ask your dealer whether they are subject to special recycling and if he accepts to take them back.



Initial setup of your DVD player

BASIC CONNECTIONS

You have several connection possibilities, depending on the devices you have. Here, we give you the recommended connection setup. For other connection setups, refer to the next page.



EN

INITIAL PLAYER SET-UP (BASIC SETTING)

1. Turn on your TV set.
2. Turn on your DVD player by pressing the **STANDBY / ON** button (on the front panel).

The first time you turn on your player, it will ask you to select a preferred language for the various displays via the menu which appears on your TV screen. If this menu is not displayed, on your TV screen select the AV socket to which you connected your player. The player menus as well as the dialogues and subtitles of the DVDs will always be presented in the language you've chosen if it is available on the discs played.

3. Select the language using **Navigation** keys on the remote control then press **OK** to confirm.

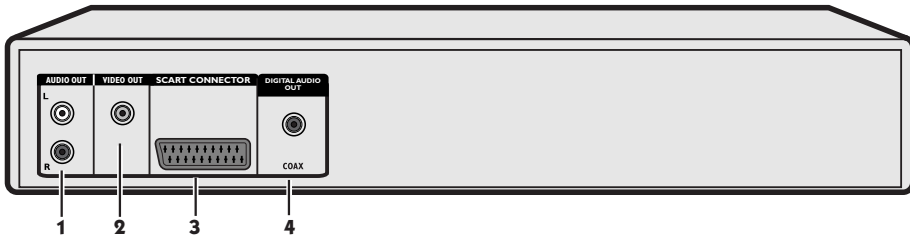


You can now watch a DVD or listen to an audio CD. However, we recommend you complete the initial player set-up in order to adapt its performances to those of your other devices. See pages 12 to 13.

Other connections



The connection setup shown on page 5 provides a rapid connection of your player. This setup gives standard-quality sound reproduction and an optimum-quality picture (RGB). You may need to use other connection setups suited to the connectors available on your other devices or to get maximum performance out of your player. Your player has other sockets for these purposes.



1. **Analog Audio Out sockets** to amplifier.
2. **Composite Video Out sockets (CVBS)**: to AV amplifier or TV (standard-quality picture).
3. **SCART/PERITEL Output (1) (RGB)**: to AV amplifier or TV
4. **Digital Audio output** to the amplifier or television set equipped with a DOLBY DIGITAL or DTS decoder.

Connections

The table below lists the connectors and quality of your player's output signals. Select one of the 2 connection setups shown for video connection and one of the 2 connection setups shown for audio connection.

Video connections (picture)

Picture quality	Type of connector used
***	• TV socket (3) (SCART socket – RGB signals)
*	• VIDEO OUT sockets (2) (RCA sockets- CVBS signal)


Audio connections (sound)

Sound quality	Type of connector used
***	• COAXIAL OUT socket (4) (RCA socket- digital signal)
**	• AUDIO OUT L / R socket (1) (RCA sockets- analog signal)



Connection through the scart socket supplies both video and audio signals. If you choose the connection using a scart cable, you don't need to connect any other sockets.




 **Dolby Digital** is a sound compression technique elaborated by Dolby Laboratories for digital audio multichannel signals. The Dolby Digital system enables any audio channel configuration, from a stereo sound (2 channels) up to the digital "surround" sound 5.1.

«Dolby Digital» and the double-D symbol are trademarks of Dolby Laboratories Licensing Corporation. Copyright 1992 Dolby Laboratories Inc. All rights reserved.

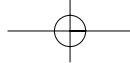


If the connecting cables are not supplied with your player, get good-quality cables, preferably well-known brands.

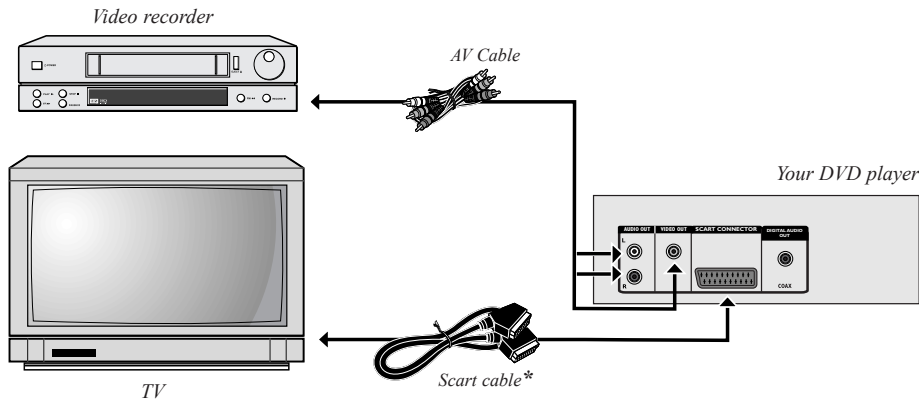


 **DTS** is a digital sound compression technique developed by **Digital Theater Sound Systems** for digital audio multichannel signals.

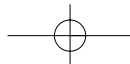
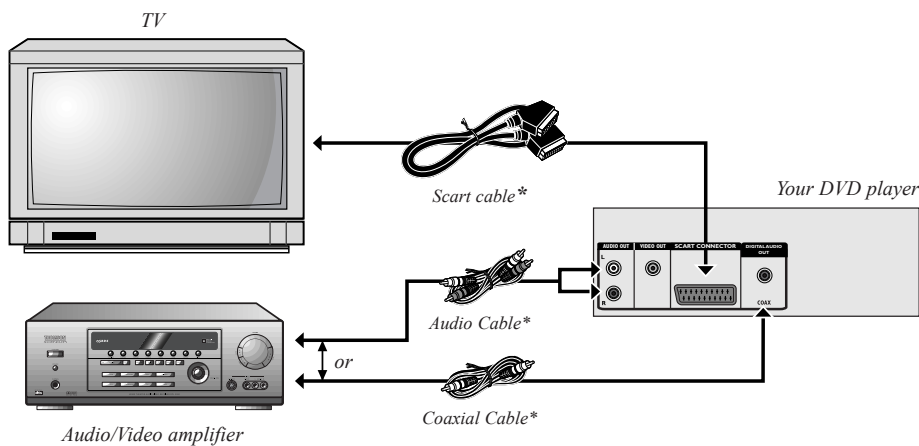
"DTS" and "DTS Digital Out" are registered trademarks of **Digital Theater Systems inc.**



Connections example



*: not provided





! • First press the DVD or TV key once, depending on which device you want to control.

TV Sets up the remote control unit to control your **THOMSON TV**.

- Displays (or hides) the subtitle language.* (→ page 23)
- Sets up the remote control unit to control your **player**.
- Displays (or hides) the dialogue language and sound format.* (→ page 23)
- Depending on the menu displayed on screen, it allows you to return to the previous menu.
- Navigation keys:
 - Selects a function in a menu or banner,
 - **OK** key to validate a selection.
- Inputs digital values (counter). (→ page 15)
- Plays a disc. (→ page 14)
- Temporarily or completely halts disc playback (press once or twice).
- Opens and closes the player's disc tray.
- Pause playback, and switch to Frame advance mode. (→ pages 14-15)

- Displays the functions banner. (→ page 11)
- Displays the contents of a DVD*. (→ page 10)
- Switches off the unit (placing it on stand-by).
- Displays the viewing angle selection function on a DVD*. (→ page 19)
- Displays the disc menu (if available) during playback or when resuming playback. (→ page 10)
- Skips forward or backward a chapter (DVD) or track (CD).
- To remove the banner displayed on screen.
- Enlarges the picture during playback, slow motion or pause mode. (→ page 19)
- To access the repeat sequence function.
- Fast forward or backward. Fast playback (forward or backward).
- Frame-by-frame advance in PAUSE mode.

! * If available on the disc being played.

To control the TV

 Keys to select programmes.	 TV Sound level.	Menu controls or special functions.
 To select the AV input.	 TV Mute (sound off)	

Front panel display

1. **STANDBY/ON**

Player on stand-by: Indicator light on.
 Player on: display lit.

2. Disc tray.

3. **OPEN/CLOSE**: To open and close the disc tray.

4. **PLAY**: To play the disc.

5. **STOP**: To stop playback.

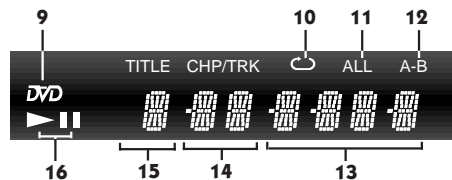
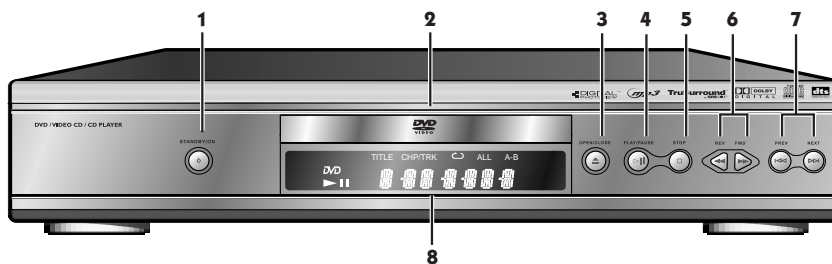
6. **SEARCH**: Fast forward or reverse (→ page 15).

7. **SKIP**: To skip a chapter forward or backwards. (→ page 14).

8. **Front panel display**



Player keys



On the display

9. **DVD** is lit up if a DVD is loaded in the player.

10. Indicates that the **Repeat** mode is set.

11. Indicates that the **Repeat All** feature is in use.

12. Indicates that the **A-B Repeat** is in use.

13. Time elapsed - minutes, seconds.

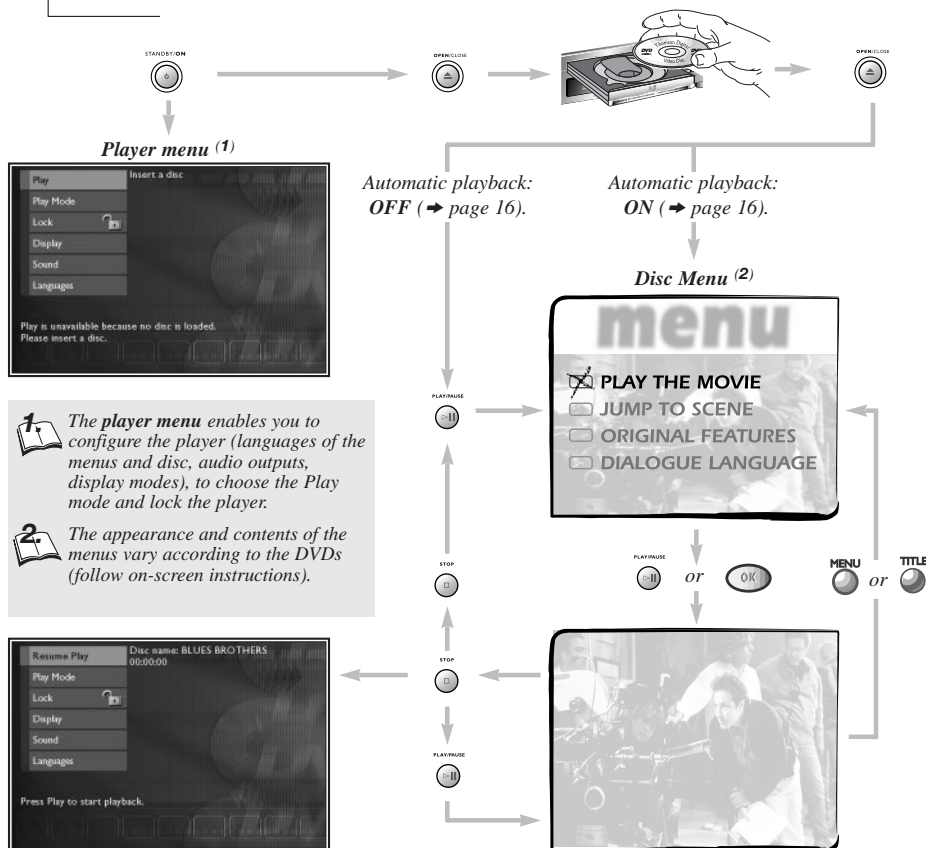
14. Chapter or track being played.

15. Title being played.

16. Forward play (▶) or pause on still frame (⏸).

Menus...

The functions of your DVD player are not all accessible directly through the remote control or front panel keys. A certain number of functions are accessible through menus that you can display or remove as you wish. These menus are used as follows:



1. The player menu enables you to configure the player (languages of the menus and disc, audio outputs, display modes), to choose the Play mode and lock the player.

2. The appearance and contents of the menus vary according to the DVDs (follow on-screen instructions).

Selecting menu functions and options using the remote control Navigation keys

- Display** the menu by pressing the **MENU** key (disc loaded = Disc Menu) or **STOP** key (= Player Menu).
- Select** a menu or function by pressing the **Navigation** keys.
- Validate** your selection by pressing **OK**.
- Change **Settings**, by pressing the **Navigation** keys.
- To exit** a menu on a disk, press **PLAY**. **To return** to the previous menu press **MENU** or **TITLE** (depends on the disk menu).
- To exit** a drive menu, press **PLAY** or **return** to the previous menu using the **Navigation** keys or the **STOP** button (depends on the disk menu).



and banners

Navigation keys

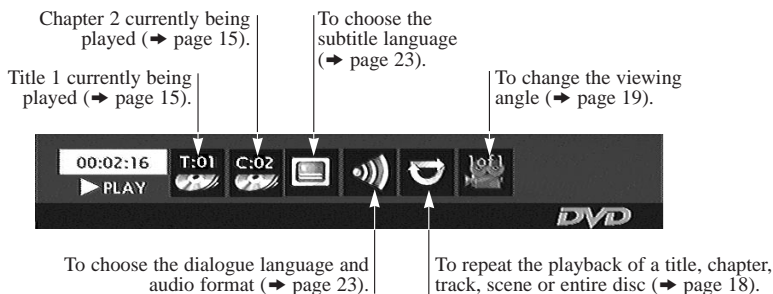


In addition to menus, your player also has banners which display the main settings related to disc playback and operation.

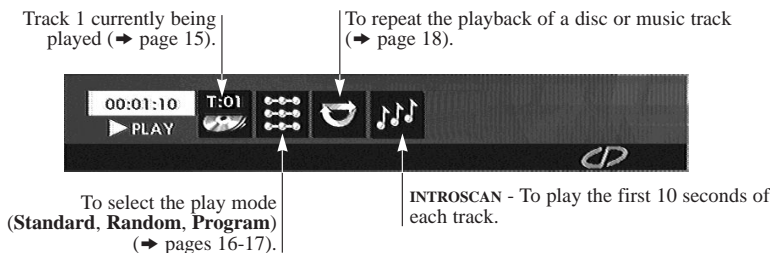
1. Load a disc and press **PLAY** to start playback.
2. To display the banner, press the yellow **INFO** key.
3. Choose an icon using the **Navigation** keys or enter a digital value with the number keys to access a chapter or a title.
4. To remove the banner, press the yellow **INFO** button or the **CLEAR** button.



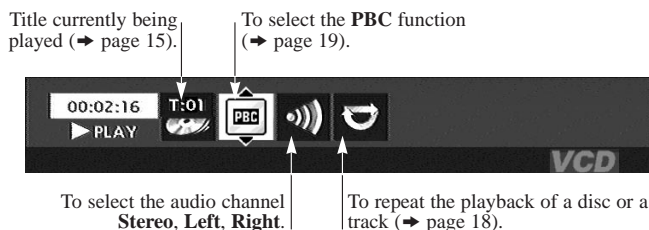
With a DVD



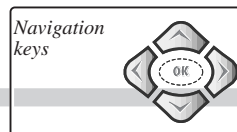
With an audio CD



With a VCD (Video CD)



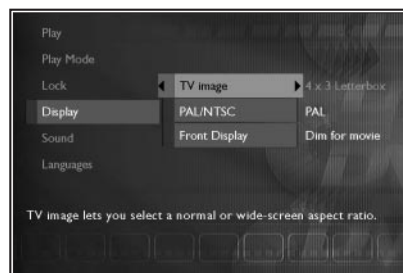
Display menu



The Display menu provides you with settings to adapt the **picture format** and TV standard to that of your TV set. You can also adjust the **brightness** of the player's display panel.

When the player menu is displayed (in stop mode):

1. select **Display** using the **Navigation** keys,
2. press **OK** to validate,
3. select a function using the **Navigation** keys,
4. adjust the setting using the **Navigation** keys.



PAL or NTSC television

In addition to the PAL DVDs and video CDs, you may enjoy your favourite NTSC movies as well (a 60 Hz PAL compatible TV set is required). If the picture on the DVD being played appear in black and white on your TV screen, the standard of the video signals transmitted to your TV is incorrect. Change the video signal from PAL to NTSC ⁽¹⁾ or vice versa.

- Select **PAL/NTSC** then tick **PAL** or **NTSC**.



PAL is the name of the colour coding system used in most European countries.
NTSC is the name of the colour coding system used in the United States and some other countries.

Display panel

Depending on the brightness of the room where you've installed your player, select one of the 4 settings to adapt the brightness of the display panel to suit its environment.

- Select **Front Display** then tick one of the settings: **Dim for Movies**, **Off for Movies**, **Always Bright**, **Always Dim**.

Picture format

Depending on the format of the DVD being played, use the **TV Picture** function to choose the format of the picture which best suits the format of your TV screen ⁽²⁾ - letterbox format 16 x 9, or standard format 4 x 3.

- With a letterbox format TV (16x9), select **16 x 9 wide screen**. Films in 16x9 will be fully displayed. Films in 4x3 will have vertical black bands on each side of the picture.
- With a 4x3 television, select **4 x 3 Letterbox** to take advantage of the pictures recorded in that format ⁽³⁾ or 16x9. Select **4 x 3 Standard** to take advantage of a 4x3 picture without distortion. For films in 16x9, the edges of the picture may extend beyond the edges of the screen.

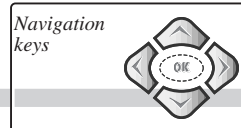



On certain DVDs, the picture format cannot be changed.



Horizontal black bands at the top and bottom of the screen.

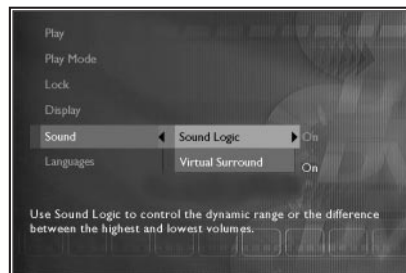
Sound menu



 The **Sound** menu provides you with settings so you can adapt your player to the devices connected. It also enables you to access specific functions.

When the player menu is displayed (in stop mode):

1. select **Sound** using the **Navigation** keys,
2. press **OK** to validate,
3. select a function using the **Navigation** keys,
4. adjust the setting using the **Navigation** keys.



Sound Logic

This function is designed for night-time listening to avoid disturbing your neighbours. The player then adjusts the differences in sound levels through dynamic compression. It then becomes easier to hear the soft sounds while the louder sounds are dampened.

- Select **Sound** then **Sound Logic** and switch the function to **On**.

Virtual Surround (SRS (1) - TruSurround)

This function provides you with virtual reproduction of the multichannel sound of a Dolby or DTS film onto the two channels of your TV or stereo amplifier. The sound effects of a 5.1 system are then simulated.

- Select **Sound** then **Virtual Surround** and switch the function to **On**.

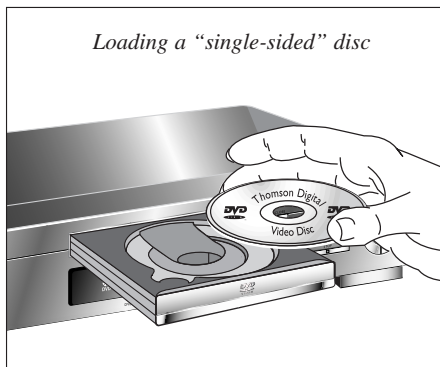
 **TruSurround** and the  symbol are registered trademarks of SRS Inc. The **TruSurround™** technology is manufactured under license from SRS Inc.

Basic functions

Navigation
keys



Loading a disc



Loading a "single-sided" disc

1. Open the disc tray by pressing the **OPEN / CLOSE** key.
2. Insert a disc. The disc label must face upwards (Audio CD, Video CD, single-sided DVD (1), etc.)
3. Close the disc tray by pressing the **OPEN / CLOSE** key.



Double-sided discs have a small label on both sides near the centre. With most DVDs, a disc-specific menu appears. In that case, follow the instructions.

Playing a disc

Disc playback starts as soon as the tray is closed (if programmed → page 16). If it doesn't start automatically, press **PLAY**.

- With a DVD, the disc menu appears. Press **OK** to start playback or select another option (4), in the disc menu using the **Navigation** keys. To validate your selection, press **OK**.
- With an audio CD or video CD, playback starts.

To access a specific CD track, DVD title or chapter, press the **INFO** key to display the Info banner (→ page 11) or press **Pr +**.

To stop playback momentarily (2) press **STOP** once. Press twice to stop it completely (3).



2. The player has memorised the last scene on the disc. If you now press **PLAY**: playback starts from this point. To erase **Resume memory**, press **STOP**.

Resume memory does not work with interactive discs (without elapsed play time information).



3. If the player is left in **STOP** mode for more than 2 minutes without any user interaction, a screen saver will be activated (fade in / fade out). After about 30 minutes have elapsed in **STOP** mode without user interaction, the player will be automatically switched off.



4. Depending on the DVDs, it may be possible to change the language during playback (→ page 23).

Quick search of images or a track

In Play mode, start the Forward or Reverse fast motion playback (1) using the **FWD** or **REV** keys (2).



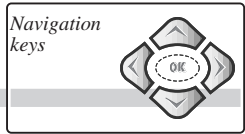
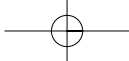
1. Press once or several times for higher speeds.



2. You can also use the player keys.



• In search mode, no sound is heard on DVDs.



Some DVDs contain several titles. These titles correspond to films, documentaries or other programs. As a general rule, each title is divided into numbered chapters. On audio CDs, the music tracks can be accessed directly. Video CDs may also contain Indexes.

Still picture and frame advance (DVD and Video CD)



Press once on **PAUSE** ⁽¹⁾ to put the film on pause.
To playback frame by frame, press **PAUSE** twice and then press **REV.** or **FWD.** repeatedly to advance the playback.

Video CDs and DVDs. If the player is left 5 minutes in pause mode, it will STOP.

Slow motion (DVD and Video CD)

Press **PAUSE** for a still.
Press **PAUSE** then **FWD** or **REV** ⁽¹⁾ to view one frame at a time either forward or backwards.

Press once or several times for higher speeds.

Direct access to a music track (Audio CD)

In Play mode, enter the number of the track that you want to hear using the remote control number keys.

Titles, chapters, time elapsed, audio and subtitles

From the banner, you can access certain functions directly using the **Navigation** keys. Choose a title or a chapter (DVD), or a track (CD, VIDEO CD). Change the language of DVD dialogues or subtitles.

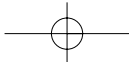


For direct access to a specific scene on the disc, select the first icon with the **Navigation** keys. Enter the requested place in the scene (expressed in hour, minutes, seconds) with the remote control number keys. (enter **001205** to access a scene which is 12 minutes and 5 seconds away from the start of the disc (DVD) or track (VIDEO CD)).

With certain discs, direct access to a scene is not possible even if the time elapsed is shown on the banner.

This symbol is sometimes displayed. It indicates that the function is not available or that the key used is incorrect.

A question mark in the counter zone indicates an input error.



Play modes

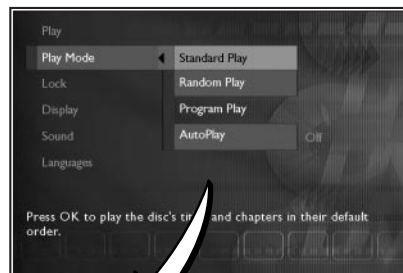
Navigation keys



Your player has several Play modes: **Standard play** which follows the order of the tracks, titles and chapters on the discs; **Random play** which plays the sequences or music tracks in a random order; **Programmed play** which allows you to choose the sequences or music tracks and the order in which they are to be played; **Automatic play** which starts playback as soon as the disc tray is closed.

Load a disc and press **STOP**. The player menu appears.

1. select **Play Mode** using the **Navigation** keys,
2. press **OK** to validate,
3. select a function using the **Navigation** keys,
4. adjust the setting using the **Navigation** keys.



	Audio CD	DVD	Video CD MP3 CD
Standard play	X	X	X
Random Play	X	X	
Program Play	X	X	
Auto Play	X	X	X
Introsan	X		

For the display and use of the menus, refer to page 10.

The functions available in each Play mode depend on the type of disc played (DVD, Video CD, Audio CD, etc.)

Automatic or Standard playback

Select **Auto Play on** if you want the disc to be played automatically once the tray is closed. If you select **Auto Play off**, you will need to press **PLAY** to start playback.

Random play (for DVDs and Audio CDs)

Select **Random Play** ⁽¹⁾ to hear an audio CD ⁽²⁾ or watch a DVD in a random order determined by your player.

¹ Random play is not available if the **Lock Player** function is enabled. It does not work with Video CDs.

² Audio CD - This function can also be accessed through the banners (→ page 11).



Navigation
keys



Programming playback

To use the programmed play function, you must first make up the list of music tracks (CD) or chapters (DVD) you want to play. You can memorise up to 20 tracks or chapters.



1. Select **Program Play** using the **Navigation** keys. The programming menu appears.
2. Follow instructions **a**, **b**, **c**, **d** to make up your selection.
 - a. Choose a title then a chapter (or a track only for an Audio CD) using the **Navigation** keys or the remote control number keys.
 - b. Select **Add** (1) then press **OK** to validate. Check that the title has been memorised in table (2).
 - c. Repeat steps **a** and **b** as many times as you wish.
 - d. Select **Play** and validate by pressing **OK** to start programmed playback (2).



To remove a chapter or a track, select **Delete** and press **OK** to validate. If you want to insert a title between 2 other titles **Add** will be replaced by **Insert**.



With an audio CD, the track of the song and its playing time will appear in the table. With a DVD, the title and chapter numbers will be displayed in the table.



To exit the programming function, press the **STOP** key on the remote control.

Programmed play (for DVDs and Audio CDs)

Select **Program Play** if you want to listen to an audio CD or watch a DVD in the order that you have pre-programmed using a list (1). To choose the playback order, refer to the next page and select **Edit Program** to display the list.



If you haven't made up your list, **programmed** play will not be possible.

Repeat playback


Navigation
keys



To repeat the playback of a title, chapter, track, scene, selected A-B segment (except on Video CDs) or entire disc.

Repeat play



Select the **Repeat** icon by pressing the  button on the remote control. You can access the repeat sequence function by displaying the banner using the yellow **INFO** button and selecting the **Repeat** icon using the **Navigation** buttons. With the **Navigation** keys, select one of the following functions: **Disc Repeat**, **Title Repeat**, **Chapter Repeat**, **A-B Press OK to set point A**, **A-B Press OK to set point B**.



• Repeat functions remain active until you turn them off, open the disc tray or turn off the power.



• Repeat play only works with discs that show the elapsed time on the display.
• This may not work correctly with certain discs (Video CDs in PBC mode).

Repeat playback of a scene between two points

1. Select the repeat play function and choose **A-B** with the **Navigation** keys.
2. Press **OK** to memorise the beginning of the scene you want to repeat.
3. Wait a few seconds before pressing again on **OK** to mark the end of the sequence to be repeated (point **B**). **A-B Repeat** appears to tell you that the repeat playback of the sequence is starting.

To stop repeating the sequence, select **Off** with the **Navigation** keys or press **STOP**.



• If during a fast forward or backward reading the **B** point is reached, the player will proceed at normal speed from the **A** point



• If during a fast search the **A** point is reached, the player will start reading at normal speed from the **A** point.
• The **A-B** repeat mode will be cancelled if you press **STOP**, if the disc is ejected or if another repeat mode is selected.

Other functions

Navigation
keys



Video CD - Playback control menu (PBC)

Some Video CDs ⁽¹⁾ have scenes and information which can be selected interactively through an on-screen menu.

This menu ⁽²⁾ appears when the disc is loaded. Use the remote control number keys to select an item in the menu.

- Depending on the disc, the menu may extend over more than one screen. To see the other screens, use the ◀◀ / ▶▶ | skip keys.
- Some discs displaying a menu at start up will automatically go in to play mode if nothing is changed on the menu after a certain period of time.

Press **PLAY** to start playback.

- To return from playback to the menu, press **RETURN**.

Press **STOP** to stop playback and remove the menu.

- Complete stop is obtained by pressing **STOP** key twice.
- Even after the player has finished playing a programme, the disc may continue to rotate while the menu is displayed. When no further selections are to be played, press **STOP** to exit the menu.
- During playback, press yellow **INFO** key: info strip is displayed on-screen.

Pedigree dogs	
1	Collie
2	Terrier
3	Bobtail
4	Shepdog
5	Husky



Video CD, version 2.0 with playback control (PBC). When the PBC function is present on the disc, "PBC" is printed on the disc jacket.



Some version-2 Video CDs with PBC may not have an on-screen menu. In that case, they function like version-1.1. video CDs or audio CDs.

DVD - Camera angles



On certain DVDs, scenes may be recorded under various angles (up to 9 viewing angles). In that case, an icon appears on the TV screen.

To change the viewing angle, use the **Navigation** keys when the icon is displayed on the TV screen.

To access the viewing angle icon directly, press the **ANGLE** key on the remote control.

DVD and Video CD - Zoom

To blow up the picture (1 to 4 times) during playback, press the key repeatedly on the remote control. To see a specific spot, move the zoom with the **Navigation** key. To return to the normal display mode, press repeatedly on the button until the zoom adjustment icon disappears.

Reading JPEG and MP3 files

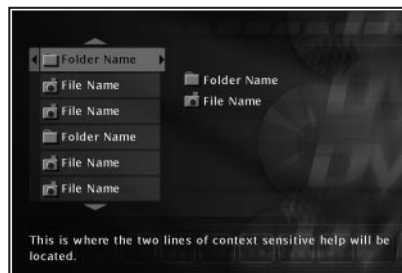
Navigation keys



Reading JPEG files

Your player can read discs containing JPEG image files with a resolution of up to 2.1 million pixels. If the Automatic Play mode has been selected after loading a JPEG disk the drive displays the list of contents of the disk (folder(s) and / or images). Select an image, from the list or folders, the slide show will start from this point, press **OK**. Your drive offers a display time: **Rapid:** 10 seconds, **Normal:** 15 seconds, **Slow:** 30 seconds

With the **Navigation** keys, select the display time and confirm with **OK**. The slide show begins. At the end of the slide show, the drive offers a summary of the images by displaying 9 of them. Using the **Navigation** keys, select an image or display the following page (9 more images) starting from an image of your choice. Press **OK** to begin the slide show starting from the selected image. During the slide show you can at any time display the summary by pressing the **STOP** button. You can also display the list of folders and images by pressing several times on **STOP** or **MENU**.



- No banner is displayed when JPEG image files are being shown.
- If the picture is displayed upside-down or as a side view, press the **ANGLE** key until it is displayed correctly.



- If JPEG or MP3 files are recorded on the disc or the disc is a Video CD containing JPEG image files, a contextual menu is displayed.

What's MP3?

MP3 is the audio **file format allowing** you to easily compress music recordings.

The main advantage of MP3 is that it enables storage of CD-quality music tracks on a home computer in manageable, compressed files.

Thanks to compression you now only need about 4 Mb of disc space for a 4 minute music track, compared with some 40 Mb for conventional file formats, but with almost no reduction in listening quality!

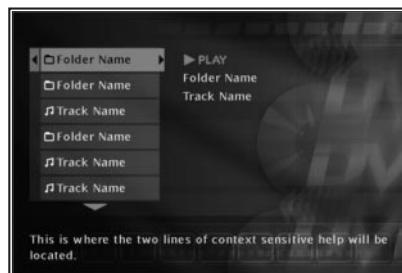


- Please read also our recommendations about MP3 discs, on page 2.

MP3 CD Playback

When you play an MP3 disc, the MP3 menu will be displayed instead of the DVD player menu. The DVD player menu is not available when playing MP3 discs. MP3 content is divided into album(s) and songs. A disc may hold several albums and each album can contain several songs. (Similar to titles and chapters on a DVD disc.)

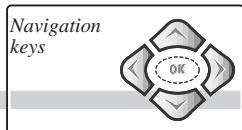
- Use the remote control **Navigation** keys to select albums and songs.
- As computer files, several levels (several albums) may be recorded on a disc.



Song skip

- Press repeatedly on the **▶▶|** or **|◀◀** keys to go to the previous song or to the next one. Press as many times as the number of songs you want to skip (wait a few seconds after each press).

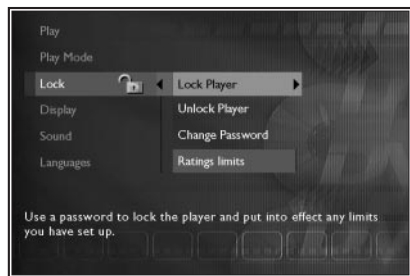
lock



To enable the **Lock Player function, you must enter a password. The **Ratings Limits** function enables you to control the type of discs or programs that your family can watch. If certain discs contain information or scenes that exceed the rating limit you've set, they will not be played. There are 8 rating levels.**

Load a disc and press **STOP**. The player menu appears.

1. select **Lock** using the **Navigation** keys,
2. press **OK** to validate,
3. select a function using the **Navigation** keys,
4. adjust the setting using the **Navigation** keys.



DVD - lock Player

1. Select the **Lock Player** line and press **OK** to validate.
2. You are requested to enter a “**new password**”. Enter your four-digit number ⁽¹⁾ using the remote control number keys, then press **OK** to validate.
3. You are requested to confirm. Repeat the operation.
 - To disable the lock, select the **Unlock Player** line and press **OK** to validate.
 - To change your password, select the **Change Password** line and press **OK** to validate. Enter your new 4-digit code. Enter it once more to confirm.

1. Choose a four-digit number that you will be able to remember easily or note it down.

1. If you've forgotten your password, consult the Troubleshooting guide at the end of this manual (➔ page 24).

DVD - Ratings limits ⁽¹⁾

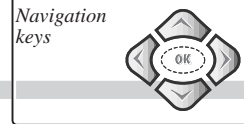
Choose the rating limit: select **Rated Titles** then press **OK** to validate. Select the level using the **Navigation** keys, then press **OK** to validate.

- Non-indexed titles can all be freely accessible or require a password: select **Unrated Titles** then press **OK** to validate. Select “**Free Access**” or “**Password Required**” then press **OK** to validate.

1. This function is only available on DVDs for which the publisher has set a rating limit. It therefore depends on the disc.

1. In Europe, very few discs have rating limits.

Preferred languages



! Your player gives you a selection of languages to choose from. You can change the language of the player menus, the language of the disc menus, the language of the dialogues and that of the subtitles. In the menu, choose your preferred language for dialogues and subtitles. If it is available on the DVD you will be playing, it will be selected automatically. The default language is the one which is selected in the main menu. During playback, you can display or remove the subtitles and change the language of the subtitles using the banners.



When the player's menu is displayed (in Stop mode):

1. select **Languages** using the **Navigation** keys,
2. press **OK** to validate,
3. select a function using the **Navigation** keys,
4. adjust the setting using the **Navigation** keys.

! If you chose "English" during the initial setting (carried out on page 5):

- the main menu, in English,
- the menu of the disc, in English (if available),
- the language of the dialogues, in English (if available).

! If there is no English on the disc for menus, dialogues, and / or subtitles, the player selects the default language of the disc.

Language of player menus

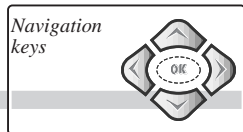
The language of your player menus was determined upon installation (➔ page 5). You can nevertheless change it by following the procedure given on this page.

To change the language of the player menus, select **Player Menu** then press **OK**. Choose the language using the **Navigation** keys and press **OK** to validate

Language of disc menus

To change the language of the disc menus, select **Disc Menu** then press **OK**. Choose the language using the **Navigation** keys and press **OK** to validate.

If the language chosen is available for a title, it is then automatically selected.



DVD - Language of the dialogues

Some discs offer a selection of languages for the dialogues. The default language is the one you selected during installation (➔ page 5) or the one you set according to the instructions on the previous page, provided this language is available on the disc being played. To change the language of the dialogues, your player offers you two possibilities ⁽¹⁾:



From the player menu

In **STOP** mode, the player menu is displayed. Use the **Navigation** keys to select the **Languages** then **Audio** to access the list of languages available ⁽²⁾.

From the banner



During **PLAYBACK**, display the banner using the **INFO** key and select the **Audio** icon with the **Navigation** keys. Choose one of the languages available on the disc.



With DVDs which have a DVD menu, we recommend that you use the disc menus rather than the player menu.

You can also change the language of the dialogues and subtitles (if they are available on the disc). During playback, display the disc menu using the **MENU** key. Then use the **Navigation** keys.



If the language chosen is also available on the DVD, it will be selected as the dialogue language. If it is not available, the preferred disc language will be selected.

Original corresponds to the original soundtrack language of the film on the disc.

DVD - Language of the subtitles

Some discs offer a selection of subtitle languages. The default language is the one you selected during installation (➔ page 5) or the one you set according to the instructions on the previous page, provided this language is available on the disc being played. To change the language of the subtitles, your player offers you two possibilities ⁽¹⁾:

With DVDs which have a DVD menu, we recommend that you use the disc menus rather than the player menu.

From the player menu

In **STOP** mode, the player menu is displayed. Use the **Navigation** keys to select the **Languages** then **Subtitles** to access the list of languages available ⁽²⁾.

From the banner



During **PLAYBACK**, display the banner using the **INFO** key and select the **Subtitles** icon with the **Navigation** keys. Choose one of the languages available on the disc.



If you choose the **"Automatic"** option, the preferred language used for sub-titles will be the one you chose for the dialogues (see above). Because of that, if the preferred language for dialogues is not available, while sub-titles are available in this language, these sub-titles will automatically appear on-screen.

Appendix

Troubleshooting guide

Before requesting service (troubleshooting).

No power?

- Correctly connect the AC Power Cord to an AC Outlet.

There is no picture?

- Turn on the TV set and your DVD player.
- Check connections.
- Make the correct input selection on the TV set.

The remote control does not work?

- The batteries are fully discharged and must be replaced. When you insert the replacement batteries, ensure you align their positive and negative polarities correctly (➔ page 4).
- Remove batteries and hold down one or more keys for several minutes to drain the microprocessor inside the remote to reset it. Reinstall batteries and try remote again.
- Point the remote control to the front of the player.
- Operate the remote control within an 8 m range from the player.
- Remove any obstacles between the remote control and the red LED on the player.

There is no sound or it can hardly be heard?

- Make the correct audio input selection and volume adjustment on the TV set or hifi system (amplifier or AV selector).

There are no subtitles?

- Check that the subtitle is recorded on the disc.
- Subtitles disappear from the TV screen. See how to display subtitles.

The menu language is not the one you want?

- The menu language for your player has not been set during set-up.
- Your preferred menu language on a DVD disc (if available) has not been set during set up.
- The menu is not available in your language on the DVD disc.

Audio (spoken) and / or subtitle language is not the one selected during the initial player set-up?

- If the audio or subtitle language is not available on the DVD disc, the language selected during initial player set-up will not be heard or seen. The disc's priority language (default language) is selected automatically. If you want another language, press **AUDIO** "🔊" key and **SUBTITLE** "🗨️" key to select it temporarily for this disc (Or press **MENU** during playback, if the disc has its own language selection menu).

If you forget your code key number for the parental rating (locking) function, you must do the following:

- Open the player's disc tray and, if it contains a disc, remove the disc. Close the disc tray. The player now displays its menu on the TV screen. Hold the **STOP** button down and press **CLEAR**. The drive is now unlocked, all the other parameters remain unchanged.

Technical data

Power requirements: AC 230 V, 50 Hz **Power consumption:** 15W **Operating temperature range:**

+ 5 to + 35° C **Operating humidity range:** 10 to 75% (no condensation)

Audio signal to noise ratio (DVD): 100dB (A wtd)* **Wow and flutter:** below measurable limits*

Total harmonic distortion: less than 0.004%* **Pickup:** Wave length: 655 / 780 nm, Laser power CLASS 1 - 2 Laser diodes

* Nominal Specification.

• THOMSON Multimedia reserves the right to change the specifications without notice.